



# SEASONAL TREE CARE MUSTS YOUR FALL CHECKLIST

*Prepare your trees for the winter months ahead and encourage healthy growth for next spring.*

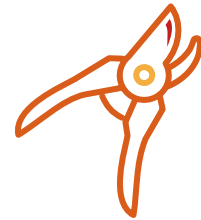


## SOIL CARE

- Plant new trees and shrubs
- Fertilize trees, shrubs and lawn
- Freshen mulch to retain moisture and soil temperature (no more than 3-4 inches)

## CLEAN UP

- Remove leaf piles from beds and turf
- Prune dead, diseased or unsafe branches

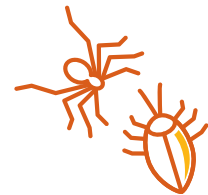


## PREPARE

- Cable or brace weak limbs to prepare for severe weather
- Water evergreens in preparation for winter

## INSPECT

- Inspect trees and shrubs for insect and disease damage
- Inspect trees for potential safety hazards
- Inspect trees for mushrooms



READ MORE SEASONAL TIPS FOR YOUR  
LANDSCAPE AT [BLOG.DAVEY.COM](http://BLOG.DAVEY.COM)



## LAWN CARE TIPS

- » Aerate turf to allow water and oxygen to access soil
- » Spot seed thin areas of turf
- » Lower mower blade to lowest setting to increase turf health for winter