



SEASONAL TREE CARE MUSTS YOUR FALL CHECKLIST

Prepare your trees for the winter months ahead and encourage healthy growth for next spring.

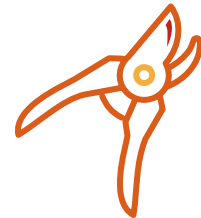


SOIL CARE

- Plant new trees and shrubs
- Fertilize trees, shrubs and lawn
- Freshen mulch to retain moisture and soil temperature (no more than 3-4 inches)

CLEAN UP

- Remove leaf piles from beds and turf
- Prune dead, diseased or unsafe branches

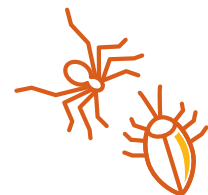


PREPARE

- Cable or brace weak limbs to prepare for severe weather
- Water evergreens in preparation for winter

INSPECT

- Inspect trees and shrubs for insect and disease damage
- Inspect trees for potential safety hazards
- Inspect trees for mushrooms



READ MORE SEASONAL TIPS FOR YOUR
LANDSCAPE AT BLOG.DAVEY.COM



LAWN CARE TIPS

- » Aerate turf to allow water and oxygen to access soil
- » Spot seed thin areas of turf
- » Lower mower blade to lowest setting to increase turf health for winter